

Minisink Valley Preserve Restoration

The Minisink Valley Preserve was established by The Nature Conservancy in 2008 as part of a strategy to create a corridor of protected land from High Point State Park to the Delaware River. Located in Montague Township, Sussex County, the preserve protects extensive wetlands and nearly one mile of the Clove Brook, a Category 1 stream that flows into the Neversink River and ultimately into the Delaware River. A 2010, 108-acre addition to the preserve encompassing forested uplands, hemlock ravines, small streams and wet swales also included an old surface gravel mine covering about 10 acres.

With funding provided by the Corporate Wetlands Restoration Partnership and working with partners including the US Fish and Wildlife Service, New Jersey Endangered and Non-Game Species Program, Amy S. Greene Environmental Consultants, Inc., URS and private donors, the Conservancy has undertaken a project to reforest the area to reduce sedimentation of the Clove Brook which is downstream of the mine site and to provide natural wetland and forest habitat for wildlife species. The restoration has benefited from the work of many volunteers, including a team from Selective Insurance Company.

The Nature Conservancy

The Nature Conservancy is a leading conservation organization working locally and globally to protect important natural areas for both wildlife and human life. Our mission is *“to conserve the lands and waters on which all life depends.”* Incorporated in 1951, the Conservancy has helped protect and manage more than 120 million acres and more than 5,000 miles of river worldwide. We maintain a presence in every state in the U.S. and are active in over 30 additional countries. Active in New Jersey since 1955, the Conservancy has helped protect nearly 50,000 acres of natural land, owns and manages 33 preserves and has over 20,000 members in the state. The New Jersey Chapter is committed to using its strengths in land acquisition, land management and stewardship, science, conservation planning, outreach and advocacy to conserve critical lands, waters and natural systems for the benefit of wildlife and people. For more information visit www.nature.org or www.nature.org/newjersey.

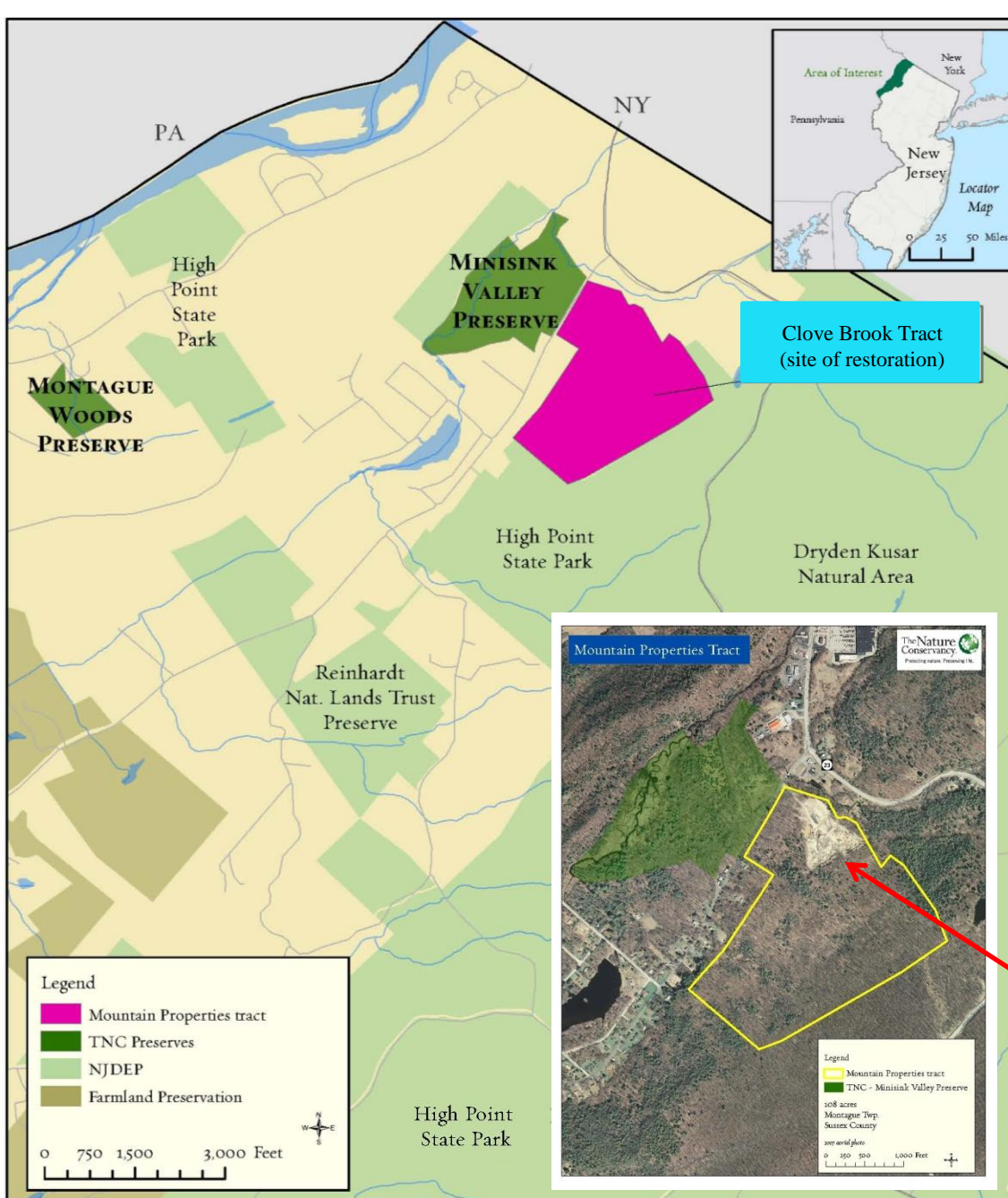
Corporate Wetlands Restoration Partnership

The Corporate Wetlands Restoration Partnership (CWRP) is an innovative private-public initiative aimed at preserving, restoring, enhancing and protecting aquatic habitats throughout the United States. Bringing together corporations, federal and state agencies, non-profit organizations and academia, the CWRP allows members to contribute in a fundamental way to crucial projects involving America’s coastal and inland aquatic resources and support related education programs.

More than 300 corporate partners have contributed time and money to facilitate selected projects. Since its inception in 1999, CWRP has aided in the restoration of more than 64,000 acres and 1,050 stream miles through the monetary donations and in-kind services of its corporate partners. For more information visit www.cwrp.org.

Directions to Minisink Valley Preserve

- Take Route 80 West to Exit 34B
- Follow Route 15 North toward Jefferson/Sparta. In about 18 miles, Route 15 North becomes Route 206 North.
- Continue straight onto Route 206 North for approximately 14 miles through Stokes State Forest.
- Make a right onto Clove Road (County Route 653).
- Stay on Clove Road for approximately 7 miles. Look for The Nature Conservancy's signage and pull-off into the driveway on the right side of the road. If you get to the junction of Route 23, you've gone too far.



Map: Northwestern portion of the Conservancy's Kittatinny Ridge and Valley priority preservation area.



Inset: Satellite photo of Minisink Valley Preserve, including the 2010 acquisition (yellow border) and the former mining site (white patch at northern end).

Photos of Minisink Valley Preserve Restoration



Gravel Mine

Photo Tour May 2012



